

Big Blue River Interagency Project Fact Sheet

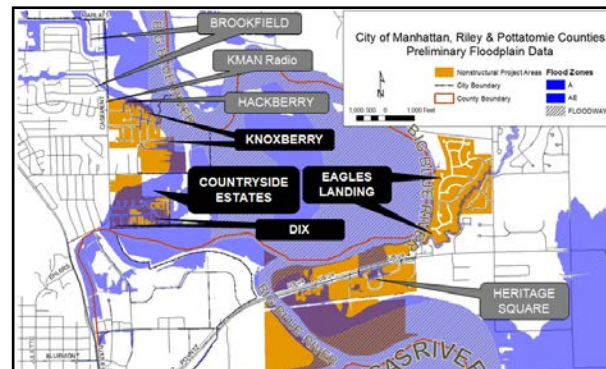
The Big Blue and Kansas Rivers' Confluence

Actions for Flood Risk Management

The U.S. Army Corps of Engineers (USACE) Silver Jackets program is the USACE means of participating on the state led Kansas Hazard Mitigation Team (KHMT). The objective is to leverage interagency abilities to reduce a variety of natural hazards, especially flooding. Since 2012, KHMT has desired winning a pilot project through the USACE for the Big Blue floodplain. The Kansas City District proposed this in three different proposals and was selected in two types of help from USACE. The city further enabled one from the National Weather Service.

This project is a partnership between several federal, state and local entities:

- The Kansas Hazard Mitigation Team
- Kansas Department of Emergency Management
- Kansas Department of Agriculture, Division of Water Resources
- City of Manhattan
- Pottawatomie County
- Riley County
- Federal Emergency Management Agency
- NOAA National Weather Service
- U.S. Geological Survey
- USACE



A map of the Big Blue showing some focus areas.

The Project

The scope of the work for the pilot project is to

1. Establish a **floodplain management plan** (FMP). This is like a playbook that
 - a. Identifies flood risks
 - b. Provides a menu of measures of the many tools for reducing risks to property owners
 - c. Describes the decision history on those tools
 - d. Establishes an action plan
 - e. Includes public participation in decisions
 - f. Complements the existing local hazard mitigation plan
 - g. Gets points in the FEMA Community Rating System and allows a reduction to a community's flood insurance premiums



2. Assist with **public involvement** needs related to explaining the tools for reducing flood risks.
 - a. Technical Advisory Group (TAG): guides the public participation process
 - b. Public Action Working-group (PAW): an outreach group acting as a conduit between the general public and the TAG.



Open House at the fire station on April 16, 2014.

3. Develop **flood forecast inundation maps** (FFIMs): a website with a set of maps tied to a stream gage at Rocky Ford and able to share forecasted flood stages. Similar to the Wildcat Creek tool.
4. Develop **future condition flood inundation mapping**: enhanced look at what the future land use upstream of the Big Blue may affect those in the floodplain just upstream of U.S. 24.

The Schedule

The FMP playbook will be developed with public input in 2014. Several PAW meetings occur about every two months, and TAG meetings are more frequent. The most important feedback on flood proofing, home elevations and possible relocations, which depend on land owners' individual decisions, will be needed by December 2014. The FFIMs were drafted by September 2014 and FFIM tool goes live by March 2015.

How To Get Involved

We have several ways for the public to contribute. Residents, businesses and any other stakeholder are encouraged to be involved.

- Attend public open house meetings.
- Provide feedback to the PAW and TAG members.
- Go to the city/counties' website:
<http://knowyourfloodriskmhk.com> or
<http://cityofmhk.com>
- Project webpage:
<http://www.nfrmp.us/state/PBigBlueKR.cfm>
- Send an email to NWK.SilverJackets@usace.army.mil.



Find Out More

U.S. Army Corps of Engineers

Silver Jackets Program <http://www.nfrmp.us/state/index.cfm> and Flood Proofing website:
<http://www.usace.army.mil/Missions/CivilWorks/ProjectPlanning/nfpc.aspx>

National Weather Service, *Advanced Hydrologic Prediction Service*

<http://water.weather.gov/ahps2/index.php?wfo=top>

Wildcat Creek example flood forecast inundation maps

http://water.weather.gov/ahps2/inundation/inundation_google.php?gage=mwck1

Federal Emergency Management Agency guide for homeowners on flood proofing and home elevation

<https://www.fema.gov/media-library/assets/documents/480>

Kansas Department of Agriculture, Division of Water Resources

<http://agriculture.ks.gov/>

Kansas Division of Emergency Management, Planning / Mitigation

<http://www.kansastag.gov/KDEM.asp?PageID=82>

Many Agencies,
 One Solution:
 Be Risk Aware

