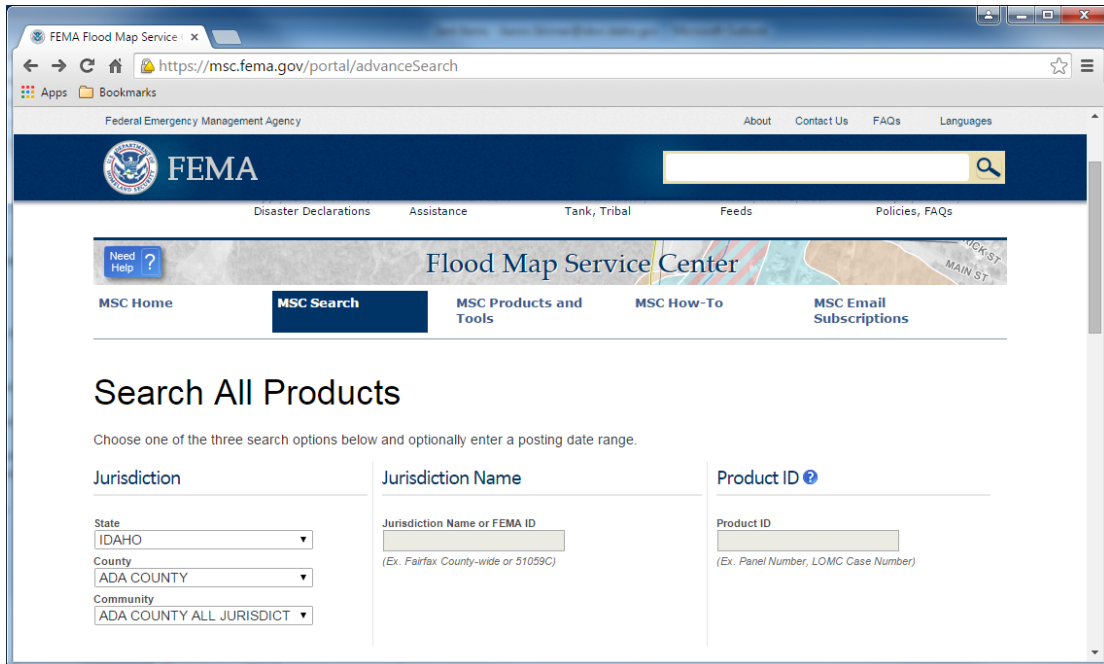


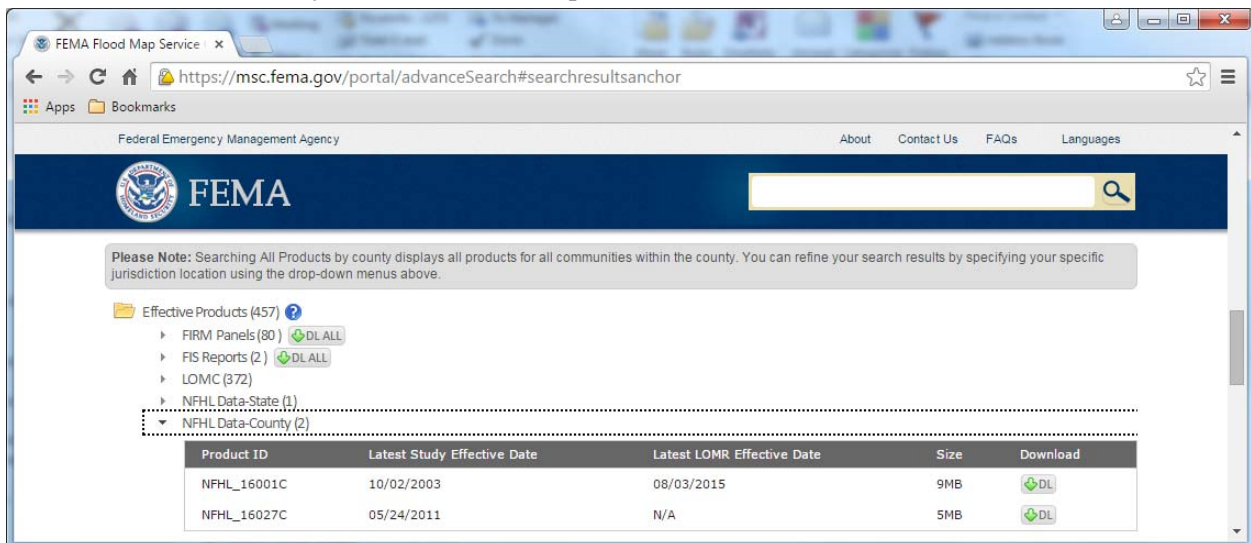


Accessing the National Flood Hazard Layer Metadata

1. Go to <https://msc.fema.gov/portal>.
2. Under the search box in the middle of the page, select the “Search All Products” icon.
3. Select “Idaho” under the Jurisdiction section on the left.
4. Find the appropriate County and Community using the drop down boxes.



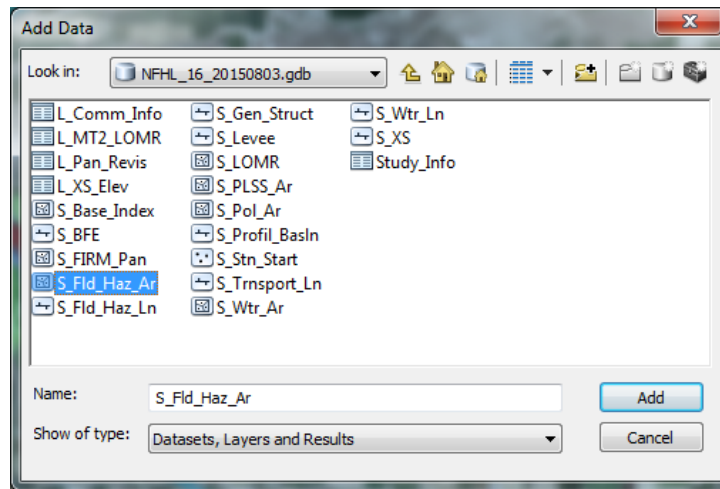
5. Click the Blue “Search” icon to view the results.
6. The “Effective Products” tab will then list all the products for the specific community. Click the “NFHL Data-County” tab for download options.





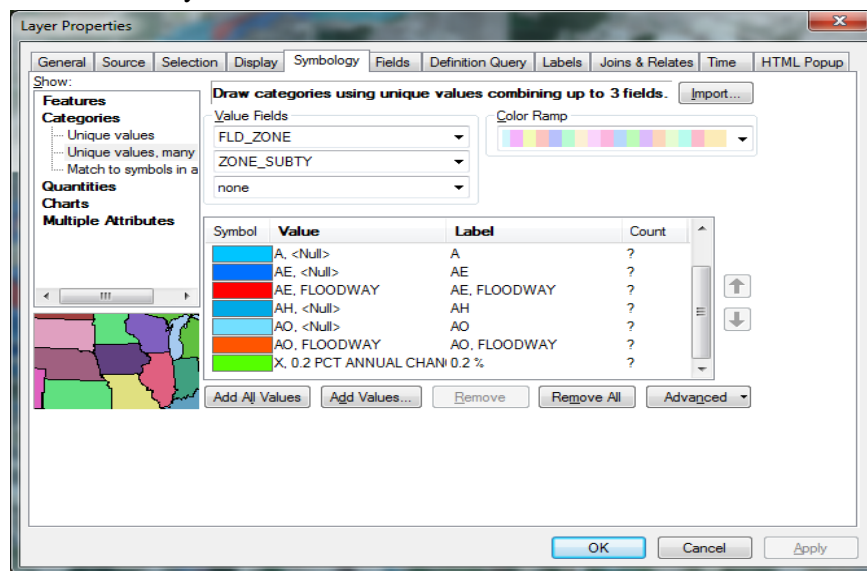
7. After the metadata is downloaded, the file will have to be “unzipped by right clicking on the file left clicking on “Extract All.” Select a destination (folder) where the files can be located. Click the “Extract” icon.
8. Once the “Extract” icon is selected, the folder where the files were stored should automatically pop-up. Close all data frames.
9. Open ArcMap.
10. Add Data by selecting the folder containing the metadata you just extracted.

Note: There are numerous shapefiles available in the metadata folder. IDWR uses the file name S_Fld_Haz_Ar as shown below.



S_BFE can be added as well to incorporate Base Flood Elevations with the associated zone.

11. The SFHA can then be color coded to better distinguish the varying zones. Right click S_Fld_Haz_Ar in the Table of Contents, selected Properties>Symbology and change the Categories to “Unique values, many.” Add the Value fields FLD_ZONE and ZONE_SUBTY and click the “Add All Values” tab at the bottom of the data frame as shown below. Establish color code zones as necessary and remove all excess zones.



12. Add other layers as needed (i.e., S_BFE or S_LOMR).